



Date: March 20, 2023

To: Robert Stoldal, Chair, Board of Museums and History

Through: Myron Freedman, Administrator, Division of Museums and History

From: Dan Thielen, Museum Director, Nevada State Railroad Museum, CC

Re: B/A 5037 Budget Amendment to support equipment purchase (\$56,000)

The Nevada State Railroad Museum Carson City requests authority to use funding from BA 5037 CAT 55-01 for the purchase of a replacement forklift. The current forklift is 40 years old and replacement parts are no longer available. Private funding will be braided with General Funds and a FNSRM donation.

Justification:

The artifacts that are regularly handled at NSRM are heavy. Some to a point where several people working as a group cannot pick them up let alone move them. This includes rail, ties, rail car trucks, wheels and axels, timber, steel stock, and machinery. We also unload trucks with palletized delivery.

The forklift is used to move rolling stock in situations where the small diesel switch engine (dinky) would be land locked by the move. The forklift has a man cage which is used to service elevated areas. This includes track lighting in the JIC, building maintenance to include painting, roof repairs, and grounds maintenance such as pruning. Many large objects require a forklift to move.

Funding Opportunity:

Revenues from admissions and train rides are exceeding our budgeted authority and we have a tremendous opportunity to leverage these funds to replace an aging piece of critical equipment.

Robust train ride and admissions revenue are a direct result of the success of the Great Western Steam Up in July 2022. The 2022 Harvest Train was well-attended and scheduled rides are generating tremendous interest. We intend to leverage this heightened level of interest into better future programming. The forklift is key to our operations.

Options:

Plan A: Cost Prohibitive

The Museum's initial desire was a new forklift. We got prices in the \$180K-\$225K. This was cost prohibitive. And the request was not put forward during the legislative request.

Plan B: Preferred Option. To purchase a late model, low hour SkyTrak style forklift. The market is very active, and dealers are moving them fast. Many used forklifts are sold before they are even serviced and prepped for sale. However, if we are lucky, we will succeed at the powerful end of the scale (5-ton). We do think there are adequate funds for the mid-to-low end of the scale.

The museum will use a combination of funds to replace this forklift. Quotes were located that met the following specifications:

1. 4-5 ton all terrain articulated forklift
2. Low years
3. Low hours
4. 25-30 foot extension capacity

Based on the attached quotes the Museum Director has projected that a total of \$115,000 in total available funds will allow the purchase of a used replacement forklift that meets the Museum's specifications.

Braided Funding Breakdown:

General Funds:	\$34,000 (expires June 30, 2023)
License Plate funds:	\$15,000
Friends of NSRM	\$10,000
5037 (55-01)* Trust Funds:	<u>\$56,000</u> (\$363,348 on hand)
	\$115,000

Plan C: Negative Program Impact

This will take the existing machine through as thorough of a rebuild as time and funding can do. This is at best a band-aid as all services will be close fit parts and not genuine replacements. The forklift will likely be out of service from 60-90 days in the busiest part of the operating year, this will have a negative impact on the museum's operating program. Further, the forklift is key to all heavy operations, it will not be available during the roofing project and HVAC retrofit.

Impact if Plan B not funded:

This braided funding request includes General Funding (GF) from admissions, train rides and license plate funds. It also includes a grant from the FNSRM. The GF dollars are at risk of reverting to the State if not expended by June 30. This opportunity is in a very narrow window of time. If approved, State Purchasing will contract for the purchase.

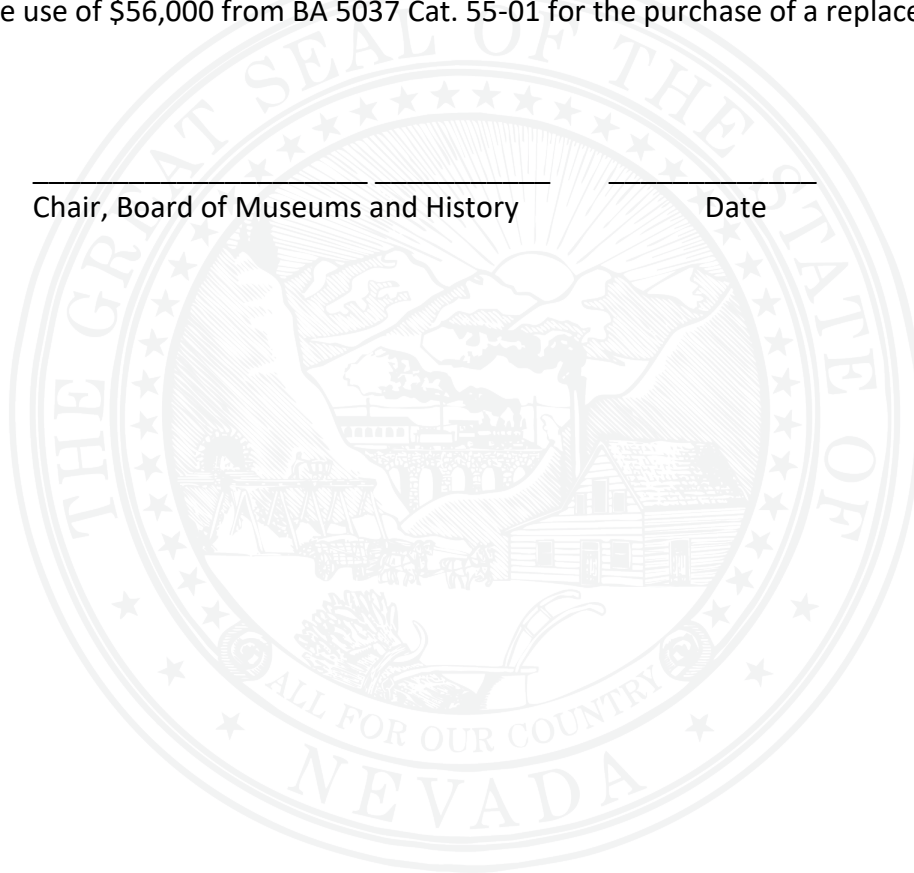
Approval:

Please sign below to signify the Board of Museums and History's approval of the request to authorize the use of \$56,000 from BA 5037 Cat. 55-01 for the purchase of a replacement forklift.

Approved:

Chair, Board of Museums and History

Date



sending payment, CALL our Accounting team at our Denver Headquarters.

Hi Chris,

Here at Discount Telehandler, we are a 'Match-Making' service for operators and telehandlers. We have over 700+ great machines in stock, so for fun we named each machine to give them personality. We make this a very fun and exciting buying experience for you! ENJOY!

Due to the worldwide equipment shortage, available equipment is depleting rapidly! To ensure you're picking the best machine, at the best price, consider moving forward with this unit today before it's too late!

Allow me to introduce you to: **Rena**





Rena

Xtreme

XR1055

Her Date of Birth	2019
Her Athletic Ability	10,000 lb
Her Body Type	Telehandler
Her Favorite Food	Diesel
Her Lift Height	55'0"
Her Hobbies Include	Weightlifting, Outriggers
Her 0-60 Time	Never
Her Price	Scroll Down for Pricing

4WD & CRAB WALK EQUIPPED!

Type	Telehandler
Model	XR1055
Year	2019
Capacity	10,000 lb
Serial #	XR1055-11-181294528
Mast Type	Telescopic
Mast Lowered	8'10"
Mast Raised	55'0"
Weight	37,000 lb
Attachment	Outriggers
Fork Length	72"

Tires	Foam Filled Pneumatic - Rough Terrain Tires! Great for all-weather conditions and driving on dirt, sand and mud!
Power	Diesel -
Hours	3715 - (only 929 hours of usage per year!)
Transmission	Lever Shift (automatic)
Drive	4WD
Engine	Cummins 3.8L 74 hp HT - (Diesel powered! Great torque & longevity!)
Availability	Quantity is subject to change daily. All equipment is sold on a first-come, first-served basis. Commit now to cherry-pick the nicest, lowest-hour machine. All lifts are available for rent until purchased. If your machine is on rent, your Down Payment will allow us to begin the process of returning your lift to our shop for final service and paint.
Comments	Always serviced and well maintained. Xtreme continues to be an industry leader with innovative product development including safety features.

Due to the worldwide equipment shortage, we have transitioned to "no-haggle" pricing. Cash price to buy it now.

\$105,704

Financing Options

\$10,570 down

+

\$2,188 / mo



Specifications

The nuts and bolts

Type	Telehandler	Drive	4WD
Model	8042	Engine	Cummins QSB 3.3 - (Diesel powered! Great torque & longevity!)
Year	2013	Availability	Quantity is subject to change daily. All equipment is sold on a first-come, first-served basis. Commit now to cherry-pick the nicest, lowest-hour machine. All lifts are available for rent until purchased. If your machine is on rent, your Down Payment will allow us to begin the process of returning your lift to our shop for final service and paint.
Capacity	8,000 lb		
Serial #	0160054506		
Mast Type	Telescopic		
Mast Lowered	8'4"		
Mast Raised	42'0"	Comments	Always serviced and well maintained. JLG Skytrak continues to be an industry leader with innovative product development including safety features.
Weight	29,500 lb		
Attachment	Auxilliary Hydraulics		
Fork Length	Standard	Brochure	Review this factory brochure for more details.
Tires	Aperture Pneumatic - Aperture Tires! Rides like an Air tire, puncture resistance of a Solid!	Location	Denver
Power	Diesel -		Condition Rating: "Rental" Click here to understand the 5 condition ratings of a forklift defined.
Hours	3323 - (only 332 hours of usage per year!)		
Transmission	Lever Shift (automatic)		



Bring Her Home Today

Pay in full or choose to finance



Thank You Goodies

Free extras from us with purchase



haggle" pricing. Cash price to buy it now.

\$105,704



Checkout Now with **stripe**

Financing Options

\$8,077 down



\$1,672 / mo



Apply Now for Online Financing

Our financing program makes getting the capital you need quick, easy, and secure.



Receive an OCTANE hat, cool shirt, tote bag, and a maintenance guide!



Rent Her for Your Needs
Best long and short term rental rates

Daily Rate	Weekly Rate	Monthly Rate
\$749	\$1,975	\$4,325

Same day deliveries on all of our equipment in and around Denver.



Call 720-460-3370 for Rentals

Quick and easy rental process with none of the hidden fees.



Equipment Matchmaker
Find your perfect match



Specifications

The nuts and bolts

Type	Telehandler	Drive	4WD
Model	6036	Engine	CUMMINS QSF3.8L - (Diesel powered! Great torque & longevity!)
Year	2014		
Capacity	6,000 lb		
Serial #	0160058422		
Mast Type	Telescopic	Availability	Quantity is subject to change daily. All equipment is sold on a first-come, first-served basis. Commit now to cherry-pick the nicest, lowest-hour machine. All lifts are available for rent until purchased. If your machine is on rent, your Down Payment will allow us to begin the process of returning your lift to our shop for final service and paint.
Mast Lowered	8'4"		
Mast Raised	36'0"		
Weight	21,300 lb		
Attachment	N/A		
Fork Length	Standard	Comments	Always serviced and well maintained. Skytrak continues to be an industry leader with innovative product development including safety features. Since it is an "enclosed cabbed unit" hours accumulate by "IDLE HOURS", not wear & tear! Approx 1,177 hours of usage. Rule of thumb, hours are generally ½ on "cabbed units".
Tires	Air Pneumatic - Air pneumatic tires for a smooth ride!		
Power	Diesel -		
Hours	2354 - (only 262 hours of usage per year!)	Brochure	Review this factory brochure for more details.
Transmission	Lever Shift (automatic)	Location	Denver



Condition Rating: "Rental"

[Click here to understand the 5 condition ratings of a forklift defined.](#)



Due to the worldwide equipment shortage, we have transitioned to "no-haggle" pricing. Cash price to buy it now.

\$87,148



Checkout Now with **stripe**

Financing Options

\$8,715 down



\$1,804 / mo



Apply Now for Online Financing

Our financing program makes getting the capital you need quick, easy, and secure.



Receive an OCTANE hat, cool shirt, tote bag, and a maintenance guide!



Rent Her for Your Needs

Best long and short term rental rates

Daily Rate

Weekly Rate

Monthly Rate

\$599

\$1,495

\$3,355

Same day deliveries on all of our equipment in and around Denver.



Call 720-460-3370 for Rentals

Quick and easy rental process with none of the hidden fees.



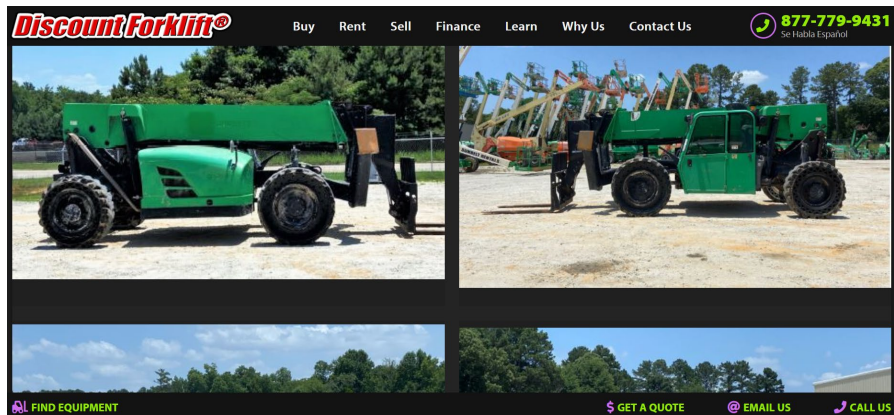
Equipment Matchmaker

Find your perfect match

 **FIND EQUIPMENT**

\$ GET A QUOTE

 **CALL US**



[Buy](#)
[Rent](#)
[Sell](#)
[Finance](#)
[Learn](#)
[Why Us](#)
[Contact Us](#)

877-779-9431
 Se Habla Español

Specifications
 The nuts and bolts

Type	Telehandler	Drive	4WD
Model	G10-55A	Engine	Cummins QSB45-C130 - (Diesel powered! Great torque & longevity!)
Year	2014	Availability	Quantity is subject to change daily. All equipment is sold on a first-come, first-served basis. Commit now to cherry-pick the nicest, lowest-hour machine. All lifts are available for rent until purchased. If your machine is on rent, your Down Payment will allow us to begin the process of returning your lift to our shop for final service and paint.
Capacity	10,000 lb - (@ 24" load center, Less de-rate for boom & attachments)	Comments	Always serviced and well maintained. JLG is an industry leader of reliable lift trucks which are legendary for their association with rugged reliability in the toughest environments. For detailed info on this lift, review this factory brochure: https://www.onesourcerental.com/specs/jlg_g10-55a_specs.pdf Since it is an "enclosed cabbed unit" hours accumulate by "HDI F HDI IRS" not wear & tear! Approx 2,500
Serial #	160060143		
Mast Type	Telescopic		
Mast Lowered	8'6"		
Mast Raised	55'0"		
Weight	37,850 lb		

FIND EQUIPMENT
[GET A QUOTE](#)
[EMAIL US](#)
[CALL US](#)

[Buy](#)
[Rent](#)
[Sell](#)
[Finance](#)
[Learn](#)
[Why Us](#)
[Contact Us](#)

877-779-9431
 Se Habla Español

purchase resistance on a joint.

Power	Diesel -
Hours	7169 - (only 797 hours of usage per year!)
Transmission	Lever Shift (automatic)

Condition Rating: "Rental"
[Click here to understand the 5 condition ratings of a forklift defined.](#)

Bring Her Home Today
 Pay in full or choose to finance

Due to the worldwide equipment shortage, we have transitioned to "no-haggle" pricing. Cash price to buy it now.

\$99,167

[Checkout Now with stripe](#)

Thank You Goodies
 Free extras from us with purchase

FIND EQUIPMENT
[GET A QUOTE](#)
[EMAIL US](#)
[CALL US](#)



Specifications

The nuts and bolts

Type	Telehandler	Drive	4WD
Model	G12-55A	Engine	Cummins QSB4.5 - (Diesel powered! Great torque & longevity!)
Year	2014	Availability	Quantity is subject to change daily. All equipment is sold on a first-come, first-served basis. Commit now to cherry-pick the nicest, lowest-hour machine. All lifts are available for rent until purchased. If your machine is on rent, your Down Payment will allow us to begin the process of returning your lift to our shop for final service and paint.
Capacity	12,000 lb		
Serial #	0160060271		
Mast Type	Telescopic		
Mast Lowered	8'4"	Comments	Always serviced and well maintained. JLG is an industry leader of reliable lift trucks which are legendary for their association with rugged reliability in the toughest environments. Since it is an "enclosed cabbed unit" hours accumulate by "IDLE HOURS", not wear & tear! Approx 3,828 hours of usage. Rule of thumb, hours are generally ½ on "cabbed units".
Mast Raised	55'0"		
Weight	37,860 lb		
Attachment	Auxilliary Hydraulics		
Fork Length	60"	Brochure	Review this factory brochure for more details.
Tires	Pneumatic - Rough Terrain Tires! Great for all-weather conditions and driving on dirt, sand and mud!		
Power	Diesel -	Location	Denver
Hours	7655 - (only 851 hours of usage per year!)		
Transmission	Lever Shift (automatic)		



Condition Rating: "Rental"

[Click here to understand the 5 condition ratings of a forklift defined.](#)



Bring Her Home Today

Pay in full or choose to finance



Thank You Goodies

Free extras from us with purchase

Due to the worldwide

[FIND EQUIPMENT](#)

[GET A QUOTE](#)

[CALL US](#)



Checkout Now with stripe

Financing Options **\$132,017**

\$13,202 down **+** **\$2,733 / mo**



Apply Now for Online
Financing

Our financing program makes getting
the capital you need quick, easy, and
secure.



Receive an OCTANE hat, cool shirt, tote bag, and a
maintenance guide!



Rent Her for Your Needs
Best long and short term rental rates

Daily Rate

Weekly Rate

Monthly Rate

\$869

\$2,455

\$5,525

Same day deliveries on all of our equipment in and around
Denver.



Call 720-460-3370 for
Rentals

Quick and easy rental process with none
of the hidden fees.



Equipment Matchmaker
Find your perfect match



Office
877-779-9431



Email
Contact Form